

Kingsbridge *Elegance*



Hartland 29 Newhaven façade

 4  2  2

Lot width : 14 Lot length: 32

Lot 19705 4 Xenia street, Manor
Lakes Vic 3024

\$830,900

Designed *for*
Luxury

Quality Inclusions

- Site cost allowance
- High ceiling 2590mm
- 900mm kitchen appliances and dishwasher included
- 40mm stone to kitchen benchtop
20mm stone to ensuite/bathroom
- Thermally broken double glazed aluminum windows & sliding doors
- 1000mm wide kitchen island bench
- Soft close cabinets throughout
- Category 3 brick included as standard
- Category 2 carpet included to all bedrooms
- LED Downlights throughout house



Scan to view a virtual tour



Scan to view the full
list of range inclusions

Get in touch

Pooja Kumari
0401 348 396
pkumari@kingsbridgehomes.com.au

Hartland 29

Newhaven facade



4



2



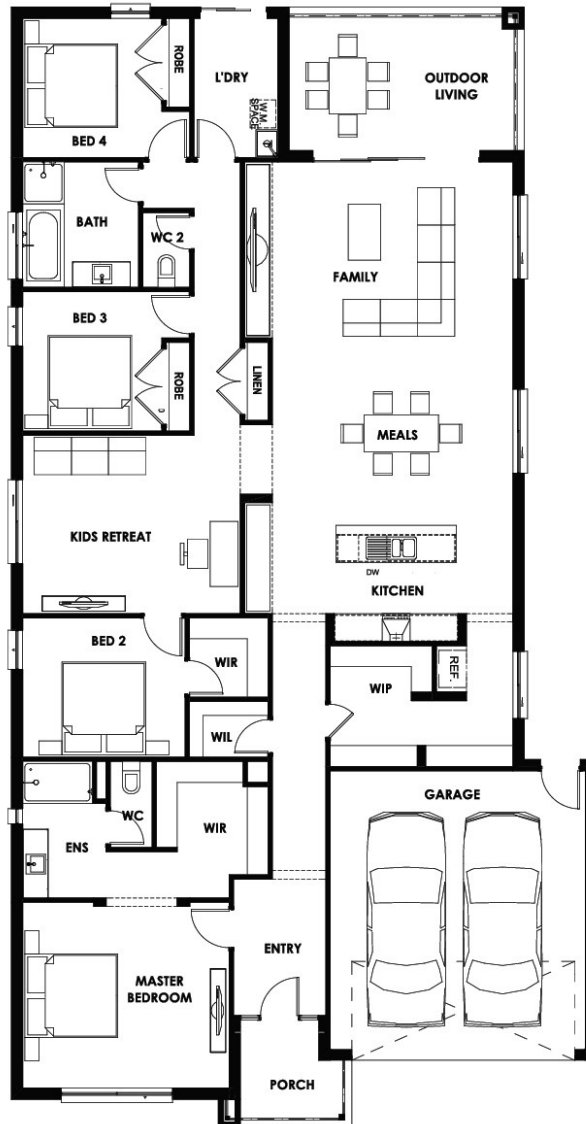
2

House Length: 24.10

House Width: 12.60

Min lot length: 14

Min lot width 32



Kingsbridge *Elegance*



Kingsbridge.com.au

The information contained herein is accurate as of time of upload but may be subject to change without notice. Prospective purchasers should make their own enquiries to satisfy themselves of all aspects in respect to their purchase. No responsibility will be accepted by the vendor and/or agent for action taken in reliance upon this information. The information contained herein does not constitute representation by the vendor and/or agent and are expressly excluded from the contract. Images are for illustrative purposes only. Design and branding by Kingsbridge.