

Kingsbridge Inspire



Kendal 25

Elliston facade



Lot size: 14.0m x 28.0m 392SQM
Lot 2210 Luxembourg Avenue, Clyde North

\$794,182*

Designed *for* Lifestyle

Get in touch

Amit Kumar

0448 016 780

akumar@kingsbridge.com.au

Quality Inclusions

- Site Cost Allowance
- 20 mm stone to ensuite/bathroom vanity benchtop and 40mm Kitchen Benchtops
- High ceiling 2590mm
- Laundry 900mm Bench with 20mm Stone
- 900mm kitchen appliances and dishwasher included
- Flyscreen to all openable windows
- Ducted Heating & Evaporative included
- Lighting pack included
- Elliston Facade



Scan to view a virtual tour of Kendal 25



Scan to view the full list of range inclusions

Kendal 25

Elliston facade



4



2



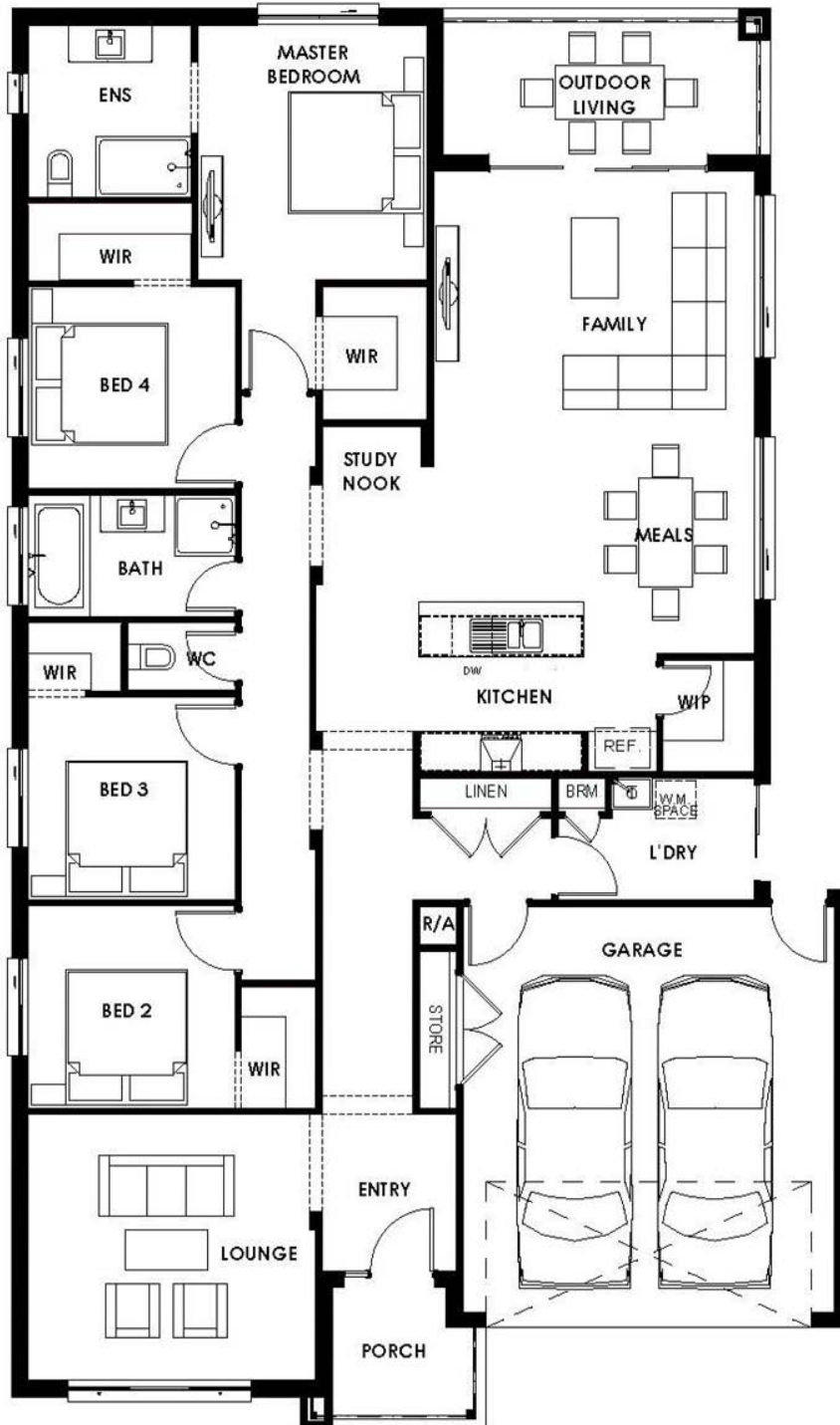
2

House Length: 21.0

House Width: 12.4

Min lot length: 28.0

Min lot width: 14.0



 Kingsbridge Inspire



Kingsbridge.com.au

The information contained herein is accurate as of time of upload but may be subject to change without notice. Prospective purchasers should make their own enquiries to satisfy themselves of all aspects in respect to their purchase. No responsibility will be accepted by the vendor and/or agent for action taken in reliance upon this information. The information contained herein does not constitute representation by the vendor and/or agent and are expressly excluded from the contract. Images are for illustrative purposes only. Design and branding by Kingsbridge.