

Winchester 50

Designed for living



Winchester 50 with Bellarine façade | On display at 2 Honour Avenue, Lilydale Victoria 3140

Kingsbridge

16.5m+



As displayed floor plan details

House Width	14.8m
House Length	23.6m
Min. Block Width	16.5m
Min. Block Length	31.0m

HOME DIMENSIONS	(m ²)	(sq)
Ground Floor Area	177.29	19.08
First Floor Area	209.77	22.58
Garage	40.35	4.34
Outdoor Living	27.84	2.99
Porch	10.43	1.12
Total	491.12	52.86

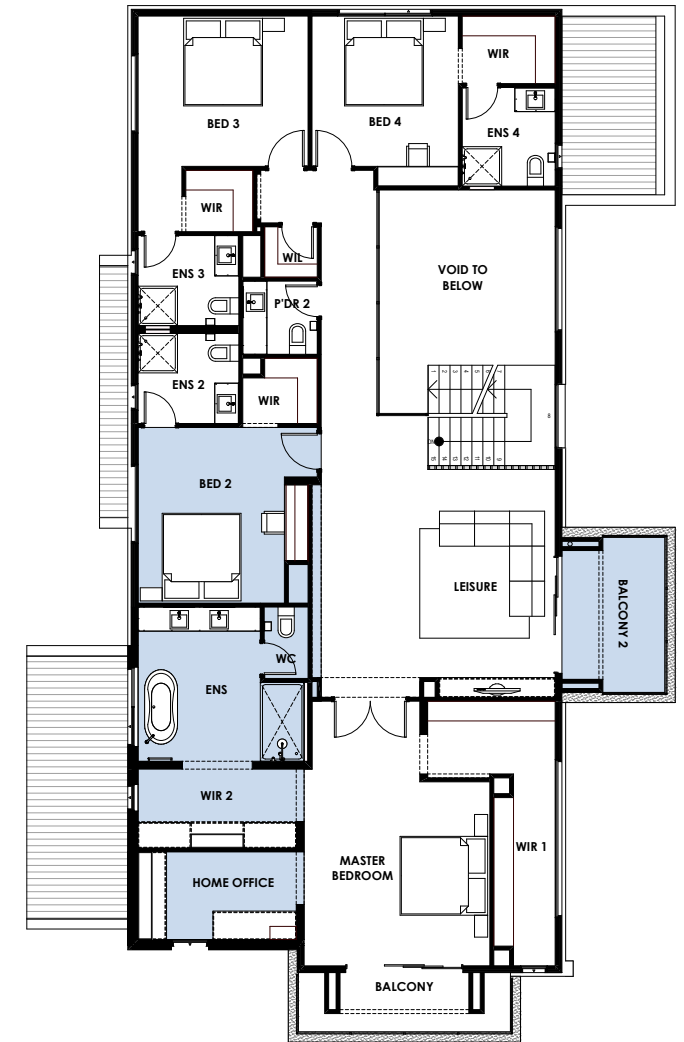
ROOM DIMENSIONS	
Master Suite	6.0m x 3.6m
Bed 2	4.0m x 3.3m
Bed 3	3.8m x 3.4m
Bed 4	3.8m x 3.4m
Guest Bedroom	4.2m x 3.8m
Leisure	5.3m x 5.2m
Home Office	3.6m x 2.0m
Family	5.4m x 6.7m
Dining	4.0m x 4.1m
Outdoor Living	6.6m x 3.9m
Balcony	5.3m x 1.6m
Balcony 2	3.5m x 2.6m

The 'as displayed' floor plan features the following upgrades:

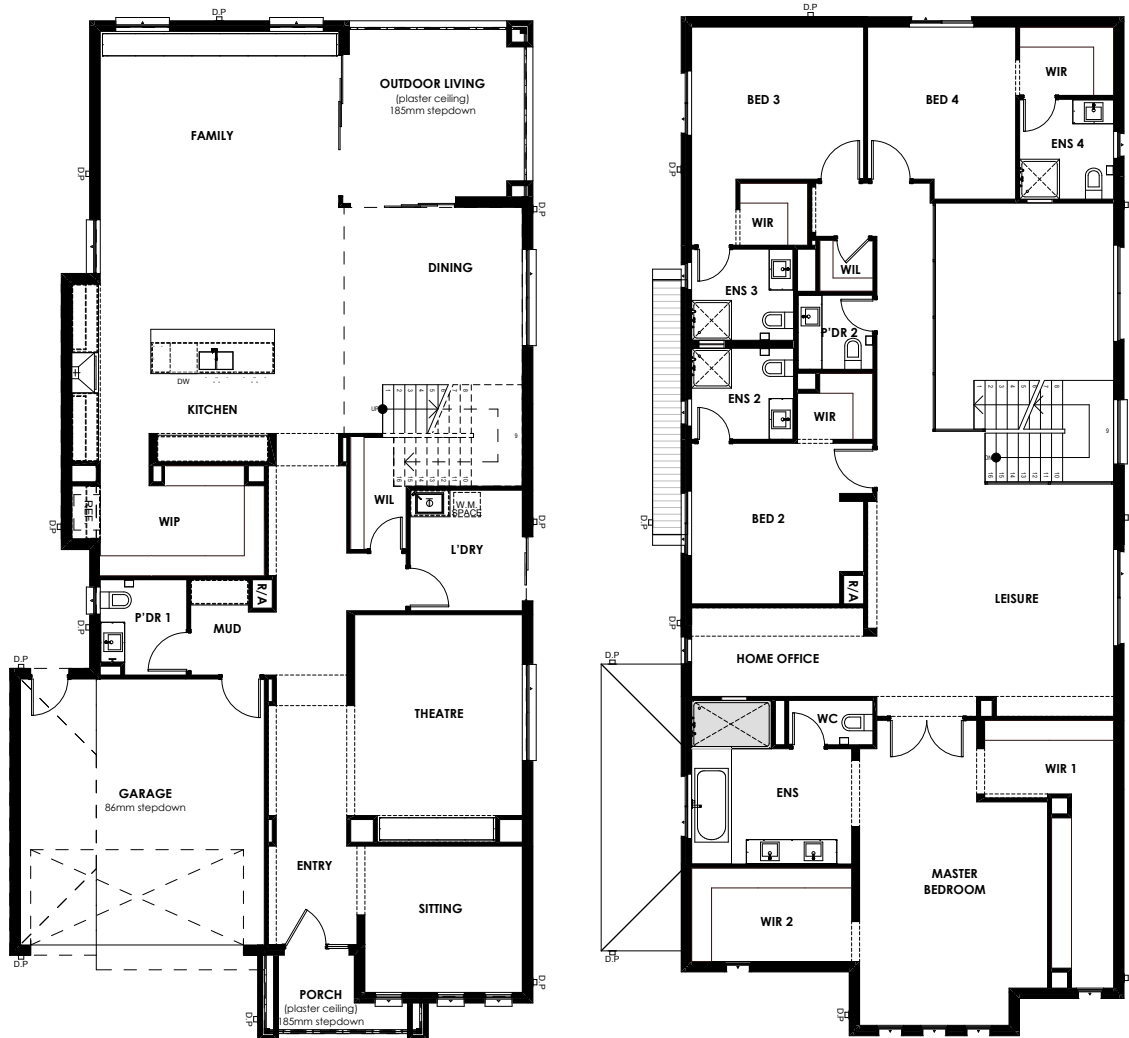
- Guest bedroom option
- Grand outdoor living
- Fire place option
- Freestanding bath option

Winchester 50 - as displayed

Bellarine façade



Winchester 50 – standard floor plan



14.0m+



Standard floor plan details

House Width	11.8m
House Length	23.0m
Min. Block Width	14.0m
Min. Block Length	30.0m

HOME DIMENSIONS	(m ²)	(sq)
Ground Floor Area	178.16	19.17
First Floor Area	212.75	22.9
Garage	36.19	3.89
Outdoor Living	16.44	1.77
Porch	5.59	0.6
Total	491.12	52.86

ROOM DIMENSIONS		
Master Suite	4.2m	x 5.6m
Bed 2	3.6m	x 3.8m
Bed 3	3.4m	x 3.8m
Bed 4	3.3m	x 3.8m
Home Theatre	3.1m	x 5.1m
Leisure	5.3m	x 5.3m
Home Office	4.0m	x 2.0m
Family	5.4m	x 6.7m
Dining	4.0m	x 4.1m
Outdoor Living	3.9m	x 4.1m

Other variations of this floor plan are available.
Additional floor plan upgrades include:

- Guest bedroom option
- Grand outdoor living
- Butlers pantry option
- Fire place option
- Shower to p'dr room option
- Rear flip option
- Freestanding bath option
- 5th bedroom option
- Common bathroom option



 Kingsbridge

On display at 2 Honour Avenue, Lilydale Victoria 3140

1800 897 876

Saturday & Sunday: 11am - 5pm

Monday to Wednesday: 12pm - 5pm

  [Kingsbridge.com.au](https://www.kingsbridge.com.au)