

ASHFORD 23



House Width 11.30m Min. Block Width 12.5m
 House Length 21.23m Min. Block Length 29.0m



HOME DIMENSIONS

Living	156.46(m ²)	16.8sq
Garage	37.17(m ²)	4.0sq
Outdoor Living	16.24(m ²)	1.8sq
Porch	4.28(m ²)	0.5sq
Total	214.15(m²)	23.1sq

ROOM DIMENSIONS

Master Suite	3.6m x 3.2m	Dining	4.0m x 3.4m
Bed 2	3.1m x 3.0m	Family	4.0m x 3.7m
Bed 3	3.0m x 3.0m	Lounge	4.4m x 3.4m
Bed 4	3.0m x 3.0m		

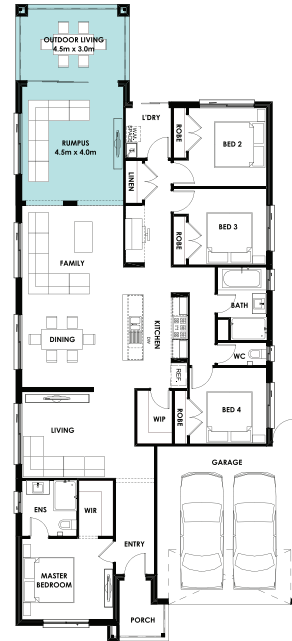
Please refer to the Sales Consultant for floorplans and further product details. Plans are exclusively owned by Kingsbridge Homes and shall not be copied, distributed or altered, without the written permission of Kingsbridge Homes. Images are for illustrative purposes only and may not represent standard inclusions. Please refer to final contract documents and final working drawings for exact details. E&OE. Kingsbridge Homes. This plan and information is indicative only and may vary without notice. Furniture or vehicles are not included in the sale of the lot. Façade finishes and colours may vary. Images are artist's impressions only. 052018

ASHFORD 23 DESIGN OPTIONS

RUMPUS ILO OUTDOOR LIVING



RUMPUS & OUTDOOR LIVING



KIDS RETREAT OPTION



KIDS RETREAT & GRAND OUTDOOR LIVING OPTION



Please refer to the Sales Consultant for floorplans and further product details. Plans are exclusively owned by Kingsbridge Homes and shall not be copied, distributed or altered, without the written permission of Kingsbridge Homes. Images are for illustrative purposes only and may not represent standard inclusions. Please refer to final contract documents and final working drawings for exact details. E&OE. Kingsbridge Homes. This plan and information is indicative only and may vary without notice. Furniture or vehicles are not included in the sale of the lot. Façade finishes and colours may vary. Images are artist's impressions only. 052018