

NEWPORT 19



House Width 9.30m Min. Block Width 10.5m
 House Length 21.00m Min. Block Length 28.0m



HOME DIMENSIONS

Living	137.13(m ²)	14.7sq
Garage	24.20(m ²)	2.6sq
Outdoor Living	8.62(m ²)	0.9sq
Porch	3.20(m ²)	0.3sq
Total	173.15(m²)	18.6sq

ROOM DIMENSIONS

Master Suite	3.6m x 3.3m	Meals	3.9m x 2.8m
Bed 2	3.0m x 3.0m	Family	4.5m x 3.9m
Bed 3	3.0m x 3.0m	Lounge / Library	3.6m x 3.2m
		Outdoor Living	4.0m x 2.1m

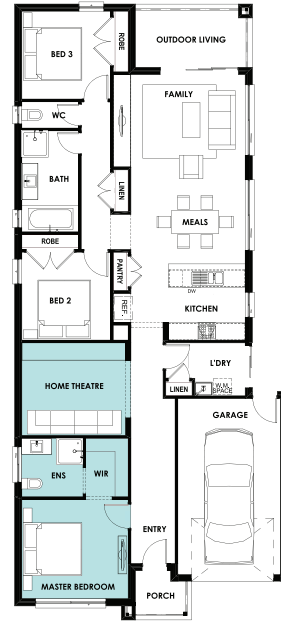
Please refer to the Sales Consultant for floorplans and further product details. Plans are exclusively owned by Kingsbridge Homes and shall not be copied, distributed or altered, without the written permission of Kingsbridge Homes. Images are for illustrative purposes only and may not represent standard inclusions. Please refer to final contract documents and final working drawings for exact details. E&OE. Kingsbridge Homes. This plan and information is indicative only and may vary without notice. Furniture or vehicles are not included in the sale of the lot. Façade finishes and colours may vary. Images are artist's impressions only. 042017

NEWPORT 19 DESIGN OPTIONS

GRAND OUTDOOR LIVING OPTION



HOME THEATRE OPTION



4TH BED ILO SITTING OPTION



Please refer to the Sales Consultant for floorplans and further product details. Plans are exclusively owned by Kingsbridge Homes and shall not be copied, distributed or altered, without the written permission of Kingsbridge Homes. Images are for illustrative purposes only and may not represent standard inclusions. Please refer to final contract documents and final working drawings for exact details. E&OE. Kingsbridge Homes. This plan and information is indicative only and may vary without notice. Furniture or vehicles are not included in the sale of the lot. Façade finishes and colours may vary. Images are artist's impressions only. 042017